



INTERSTATE 71

IKEA

Signed Lease  
13 acre Entertainment user

Gemini Place/Ikea Way

COSTCO WHOLESALE

Cabela's

POLARIS FASHION PLACE

Hilton HOTELS & RESORTS

Mc Graw Hill Education

METTLER TOLEDO

WESTPHEL

roll

FRESH THYME

Building B

BUFFALO WILD WINGS

Paramount Assisted living

Polaris Parkway

Benny BAGELS

101 BEER KITCHEN

MUTTS & CO.

Orangetheory

JJ PUG & DONUT

HEALTHSOUTH

Liebert

EMERSON

The Business at WESTAR

Firestone

Ventech

Quest

InVentiv Health

SOGETI

Hampton Inn

UnitedHealthcare

County Line Road

Worthington Road

Cleveland Avenue

EXEL

OhioHealth RENAISSANCE HOTELS



**CT Consultants**  
engineers | architects | planners

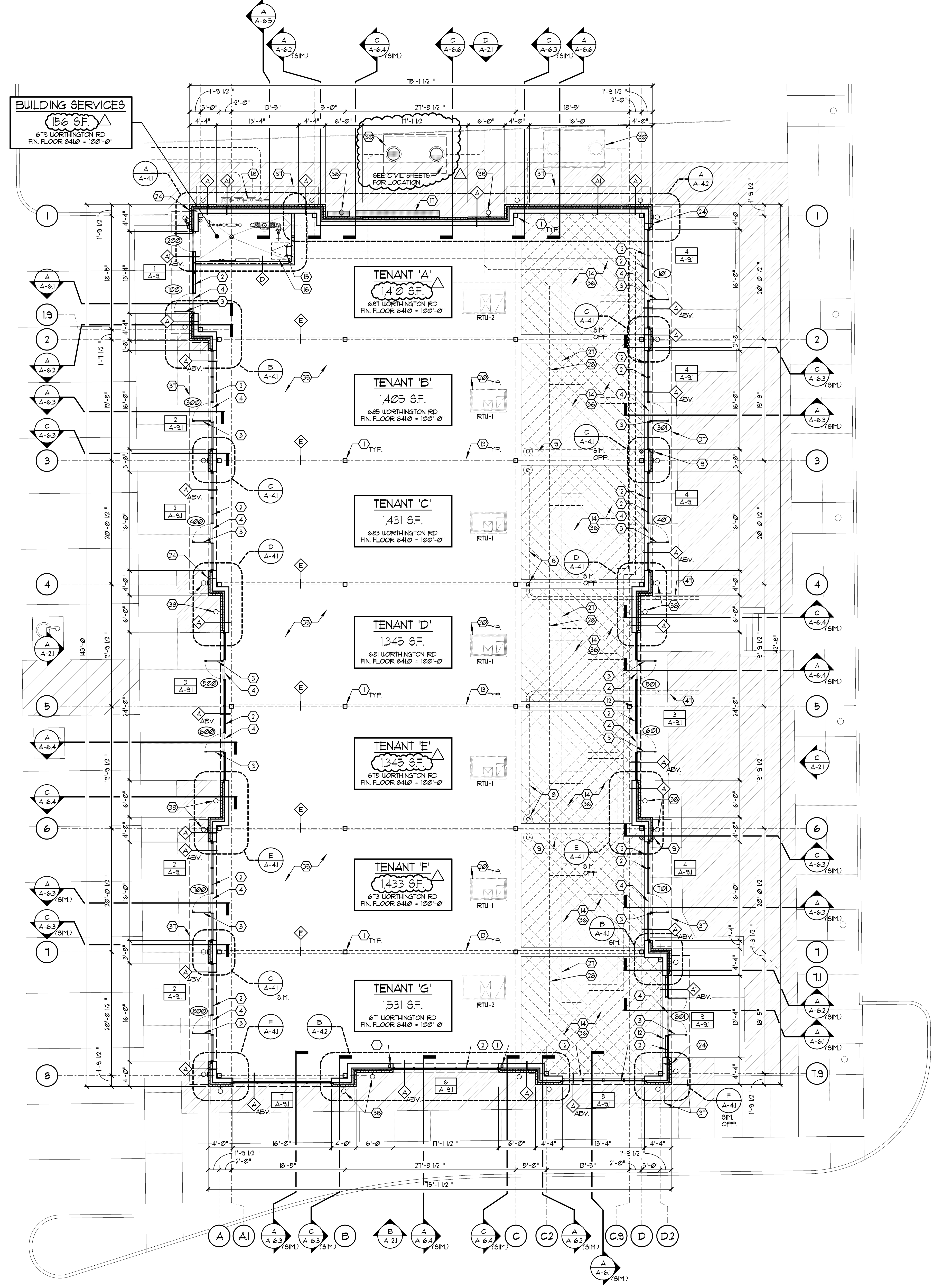


+/-10,000 sq. ft.  
Building B



# WESTAR NEIGHBORHOOD RETAIL CENTER

PREPARED FOR  
N.P. LIMITED DEVELOPMENT



**BUILDING SERVICES**  
 156 SF.  
 679 WORTHINGTON RD  
 FIN FLOOR 841.0 - 100'-0"

**TENANT 'A'**  
 1410 SF.  
 671 WORTHINGTON RD  
 FIN FLOOR 841.0 - 100'-0"

**TENANT 'B'**  
 1405 SF.  
 665 WORTHINGTON RD  
 FIN FLOOR 841.0 - 100'-0"

**TENANT 'C'**  
 1431 SF.  
 663 WORTHINGTON RD  
 FIN FLOOR 841.0 - 100'-0"

**TENANT 'D'**  
 1345 SF.  
 661 WORTHINGTON RD  
 FIN FLOOR 841.0 - 100'-0"

**TENANT 'E'**  
 1345 SF.  
 675 WORTHINGTON RD  
 FIN FLOOR 841.0 - 100'-0"

**TENANT 'F'**  
 1433 SF.  
 673 WORTHINGTON RD  
 FIN FLOOR 841.0 - 100'-0"

**TENANT 'G'**  
 1531 SF.  
 671 WORTHINGTON RD  
 FIN FLOOR 841.0 - 100'-0"

DENOTES AREA OF CONCRETE SLAB LEAVE-OUT FOR FUTURE TENANT'S UNDERGROUND UTILITY ROUGH-INS. BASE BID - PROVIDE COMPACTED GRANULAR FILL (SEE STRUCTURAL SHEETS).  
 BID ALTERNATE - PROVIDE LINE-ITEM COST TO INSTALL 4" CONCRETE SLAB w/ REINFORCING OF 5 MIL VAPOR BARRIER AFTER TENANT'S UNDERGROUND WORK IS COMPLETE. PROVIDE AS DIRECTED BY OWNER'S REP.

**SYMBOL LEGEND**

(X)	PLAN CODED NOTE TAG (SEE "PLAN CODED NOTES" ON THIS SHEET)
(D)	PARTITION / WALL TYPE (SEE "WALL & PARTITION LEGEND" ON THIS SHEET)
(D)	DOOR NUMBER TAG (SEE "DOOR & FRAME SCHEDULE" ON SHEET A-81)
(X)	STOREFRONT SYSTEM TAG (SEE SHEET A-91 FOR STOREFRONT ELEVATIONS)
(X)	BRICK / STONE CONTROL JOINT AT 24'-0" O.C. MAX. (SEE DETAIL F/A-13)
(X)	NEW WALL TYPE (SEE "WALL & PARTITION LEGEND" ON THIS SHEET)
(X)	WINDOW / STOREFRONT SYSTEM (SEE SHEET A-81 FOR WINDOW SYSTEM ELEVATIONS)

**CODED PLAN NOTES**

(1) STRUCTURAL STEEL COLUMN (SEE STRUCTURAL SHEETS)	(26) FLOOR DRAIN (SEE PLUMBING SHEETS)
(2) STOREFRONT SYSTEM W/ GLASS AS SCHEDULED. SEE STOREFRONT ELEVATIONS, SHEET A-91	(27) LINE OF 6" SANITARY SERVICE BELOW (SEE PLUMBING SHEETS)
(3) 3'-0" x 1'-0" MEDIUM STILE FULL LITE ALUMINUM STOREFRONT DOOR WITH 1" INSULATED THERMOFLEX CLEAR GLASS. SEE DOOR SCHEDULE, SHEET A-91. (9F-1)	(28) LINE OF 4" GREASE SERVICE BELOW (SEE PLUMBING SHEETS)
(4) 3" ADA/AS COMPLIANT ALUMINUM THRESHOLD AT ALL EXTERIOR DOORS SET IN FULL BEAD OF SEALANT.	(29) 4" x 8" FRT FLYWOOD HOUSE TELEPHONE BACKER BOARD. (SEE ELECTRICAL SHEETS) TELEPHONE SERVICE LOCATION.
(5) INSULATED FLUSH HOLLOW METAL SERVICE DOOR. (SEE DOOR/HARDWARE SCHEDULES, SHEET A-91) PAINT (PT-1)	(30) FUTURE BELOW GRADE 500 GALLON GREASE INTERCEPTOR / VAULT BY OTHERS, N.I.C. (SEE PLUMBING & CIVIL SHEETS) SHOWN FOR REFERENCE ONLY
(6) EXTERIOR STAIR. SEE CIVIL ENGINEERING SHEETS	(31) SPRINKLER MONITORING PANEL (SEE ELECTRICAL SHEETS)
(7) 4" CONCRETE SIDEWALK w/ COMPACTED GRANULAR FILL w/ REINFORCING & INTEGRAL TURN-DOWN CURB. SLOPE 1/4" PER FOOT AWAY FROM BUILDING. (SEE CIVIL AND SITE DEVELOPMENT SHEETS)	(32) PAD MOUNTED ELECTRICAL TRANSFORMER AND SECONDARY ENCLOSURE. (SEE SITE UTILITY AND ELECTRICAL SHEETS) CONTRACTOR TO COORDINATE FINAL BOLLARD LOCATIONS & QUANTITIES w/ UTILITY CO & OWNER'S REP.
(8) 6" HORIZONTAL & 6" VERTICAL STORM LEADER HOLD VERTICAL TIGHT TO FRAMING. CONNECT TO UNDERGROUND STORM LINE (SEE PLUMBING AND CIVIL SHEETS). SEE ROOF PLAN FOR DRAIN LOCATION	(33) FIRE DEPARTMENT CONNECTION PROVIDE AT ADDRESS SIDE OF BUILDING PER A/H.U. REQUIREMENTS (SEE FIRE PROTECTION SHEETS) COORDINATE EXACT LOCATION w/ A/H.U.
(9) 6" HORIZONTAL & 6" VERTICAL STORM LEADERS w/ THRU WALL LAMB'S TONGUE OVERFLOW DRAIN w/ INSECT SCREEN HOLD VERTICAL TIGHT TO FRAMING (SEE PLUMBING SHEETS). MOUNT AT THE CONSISTENT ELEVATION (2'-0" AFF.)	(34) IRRIGATION PIPING AND CONTROL PANEL (SEE PLUMBING & LANDSCAPE DRAWINGS)
(10) MASONRY DUMPSTER ENCLOSURE / SCREEN WALL. (SEE SHEET SD-12)	(35) 4" MAX COMPACTED GRANULAR FILL (SEE STRUCTURAL SHEETS FOR SLAB CONSTRUCTION AND CONTROL JOINT REQUIREMENTS)
(11) CEDAR DUMPSTER GATES w/ GALV. STEEL PIPE FRAME PROVIDE STEEL LATCH AND VERT. PIN AT EACH DOOR. SEE SHT. SD-12	(36) 4" MIN COMPACTED GRANULAR FILL TO BE PROVIDED UNDER TENANT FUTURE/EXISTING DOCUMENTATION AND CONSTRUCTION
(12) POUR PORTION OF SLAB THROUGH OPENING AS REQUIRED TO INSTALL HOLLOW METAL DOORS AND STOREFRONT.	(37) LINE OF AUNING/CANOPY ABOVE. SEE WALL SECTIONS.
(13) LINE OF FUTURE TENANT INTERIOR PARTITION TO BE PROVIDED AND INSTALLED BY OTHERS. (N.I.C.) SHOWN FOR COORDINATION PURPOSES ONLY.	(38) DECORATIVE WALL MOUNTED LIGHT FIXTURE. SEE ELEVATIONS AND ELECTRICAL SHEETS.
(14) HATCHED AREA INDICATES AREA OF FLOOR SLAB TO BE HELD OUT FOR FUTURE TENANT UTILITY ROUGH-INS. PROVIDE 4" MIN. COMPACTED FILL AT 4" BELOW FINISHED GRADE. SEE DETAIL C/A-12	(39) COMMUNICATIONS JUNCTION BOX. SEE ELECTRICAL SHEETS.
(15) STEEL ROOF ACCESS LADDER (SEE DETAIL H/A-33)	(40) COMMUNICATION CONDUITS-SEE ELECTRICAL SHEETS.
(16) ROOF ACCESS HATCH ABOVE. (ALIGN WITH LADDER LOCATION). G.C. TO COORDINATE w/ SUB-TRACERS.	(41) EXTERIOR WATERPROOF HORN STROBE DEVICE. MOUNT AT 11'-0" AFF. (SEE ELECTRICAL SHEETS)
(17) 2" MP GAS SERVICE AND METER SET. (SEE PLUMBING SHEETS) PAINT TO MATCH ADJACENT BRICK (PT-1) HOLD VERTICAL GAS PIPING 52" AFF (MAX) AND EXTEND INTO BUILDING ENVELOPE.	(42) FIRE DEPARTMENT ACCESS KNOX BOX. MOUNT AT 54" AFF. SEE SPECIFICATIONS.
(18) ELECTRIC SERVICE WIREWAY, CT CABINETS, METERS & DISCONNECTS. (SEE ELECTRICAL SHEETS. PAINT TO MATCH ADJACENT BRICK (PT-1).	(43) FUTURE TENANT ELECTRICAL PANEL. SHOWN FOR REFERENCE ONLY. (SEE ELECTRICAL SHEETS)
(19) 2" MP GAS SERVICE AND METER SET. (SEE PLUMBING SHEETS) PAINT TO MATCH ADJACENT BRICK (PT-1) HOLD VERTICAL GAS PIPING 52" AFF (MAX) AND EXTEND INTO BUILDING ENVELOPE.	(44) CEDAR WOOD TRELLIS PANELS w/ IVY. 2" OFF FACE OF BUILDING. (SEE LANDSCAPE DRAWINGS, ELEVATIONS, AND C/A-62)
(20) ELECTRIC HOUSE PANEL. (SEE ELECTRICAL SHEETS)	(45) 4" TELEPHONE AND CATV SERVICE CONDUITS w/ PULLRIG. SEE ELECTRICAL SHEETS.
(21) LINE OF ROOF MOUNTED HVAC UNIT ABOVE. (SEE MECHANICAL & STRUCTURAL SHEETS)	(46) (2) 2" COMMUNICATIONS CONDUITS FOR FUTURE TENANT.
(22) ELECTRIC UNIT HEATER ABOVE. (SEE ELECTRICAL SHEETS)	(47) 6" STORM LINE. (SEE PLUMBING & CIVIL SHEETS)
(23) 2" DOMESTIC WATER SERVICE & METER w/ BACKFLOW PREVENTER AND IRRIGATION DUCT METER. (SEE PLUMBING SHEETS)	
(24) CONCRETE FILLED 6" DIA x 4'-0" AFG. STEEL BOLLARDS. PAINT (PT-1). SEE DETAIL F/B-11	
(25) FROST PROOF HOSE BIBS (SEE PLUMBING SHEETS) ENSURE ALL PIPING IS WITHIN THE THERMAL ENVELOPE.	
(26) 6" FIRE SERVICE, BACKFLOW PREVENTER & RISER. (SEE FIRE PROTECTION & PLUMBING SHEETS)	

**PARTITION SCHEDULE**

MARK	RATING	NOTES	DESCRIPTION	DIAGRAM	DEPTH
(A)			3 5/8" MASONRY VENEER w/ AIRSPACE OVER 2 1/2" DOU THERMAX (C2) EXTERIOR INSULATION OF 5/8" DENS-GLASS GOLD SHEATHING OVER 3" (18 GA) METAL STUDS # 16" O.C. GALVANIZED WALL TIES SHALL BE SPACED AT A MAXIMUM OF 16" O.C. VERTICALLY AND 24" O.C. HORIZONTALLY.		1'-4 1/2"
(A1)			5/8" GYP. BRD. SHEATHING (INTERIOR SIDE) BY OTHERS (N.I.C.)		1'-4"
(B)			3 5/8" MASONRY VENEER w/ AIRSPACE OVER 3" DOU THERMAX (C2) EXTERIOR INSULATION OF 5/8" DENS-GLASS GOLD SHEATHING OVER 3" (18 GA) METAL STUDS LAPPED OVER 3" (18 GA) METAL STUDS # 16" O.C. GALVANIZED WALL TIES SHALL BE SPACED AT A MAXIMUM OF 16" O.C. VERTICALLY AND 24" O.C. HORIZONTALLY.		1'-8 1/2"
(B1)			5/8" GYP. BRD. SHEATHING (INTERIOR SIDE) BY OTHERS (N.I.C.)		1'-4"
(C)			3 5/8" BRICK VENEER OVER 8" (NO.1) STANDARD CMU w/ GROUTED SOLID COLLAR JOINT		1'-2"
(C1)			PAINT (PT-1) EXPOSED CMU (INTERIOR SIDE OF DUMPSTER ENCLOSURE)		1'-2"
(D)			3/4" FRT FLYWOOD SHEATHING TO 8'-0" AFF OVER USG SHEETROCK BRAND MOLD TOUGH GYPSUM PANELS ON BUILDING SERVICES SIDE AND 5/8" TYPE X GYPSUM BOARD ON TENANT SIDE OVER 1/2" (20 GA) METAL STUDS # 24" O.C. WITH 6" SOUND ATTENUATING BATT INSULATION FULL HEIGHT.		6"
(E)			BY OTHERS, N.I.C. (SHOWN FOR COORDINATION ONLY) DEMISING PARTITION (BY OTHERS, N.I.C.)		1 1/4"

- FIELD VERIFY ALL DIMENSIONS. DIMENSIONS ARE TO FACE OF METAL STUD, UNLESS NOTED OTHERWISE.
- ALL PARTITIONS TO BE BUILT TO DECK SHALL INCLUDE ANY STRUCTURE SUCH AS JOISTS AND BEAMS THAT MAY NEED TO BE PRIMED OUT TO PROVIDE DRYWALL TO DECK. ALL PENETRATIONS AND FLUTES IN DECK SHALL BE SEALED AS REQ'D.
- PROVIDE BRACING PER MAJOR RECOMMENDATIONS OF ALL PARTITIONS THAT DO NOT EXTEND FULL HEIGHT TO UNDERSIDE OF STRUCTURE ABOVE.
- AT ALL FRAMING THAT EXTENDS FROM SLAB TO STRUCTURE ABOVE, PROVIDE 4 GALVANIZED STEEL SHEET DEEP LEG DEFLECTION TRACK (20 GA.) SLP-TRK" BY SLURTRACK SYSTEMS, INC. SECURE TO STRUCTURE w/ FASTENERS AT 2'-0" O.C. MAX. DO NOT SECURE TRACK TO VERTICAL STUDS. PROVIDE MINIMUM BRACING AT A MAXIMUM OF 6'-0" VERTICALLY.
- ALL BOTTOM TRACK RUNNERS TO BE HELD IN PLACE w/ FASTENERS AT 2'-0" O.C. MAX. WITH HILTI FOUER DRIVER ANCHOR IC50 V388 2045" DIA. SHANK w/ 1/8" MIN PENETRATION OR EQUAL. (SEE DETAIL C/A-13)
- PROVIDE HORIZONTAL BRIDGING IN ALL PARTITION FRAMING AT A MAXIMUM OF 6'-0" VERTICALLY.
- ALL GYPSUM BOARD IS TO BE 5/8" THICK UNLESS NOTED OTHERWISE. PROVIDE TYPE X GYPSUM BOARD AT ALL FIRE RATED PARTITIONS.
- METAL STUD NON-STRUCTURAL WALL SYSTEMS TO FOLLOW ASTM C754 & ASTM C645. PROVIDE 5/8" RIGIDIBLE METAL STUDS AT ALL OPENINGS AND TRIPLE METAL STUDS AT CORNERS.
- WATER RESISTANT GYP. BRD. TO BE 5/8" USG SHEETROCK BRAND MOLD TOUGH GYPSUM PANELS COMPLYING WITH ASTM C754 OR C755. PROVIDE AT ALL TOILET ROOM WALLS, PLUMBING CHASE WALLS, JANITOR CLOSETS, MECHANICAL ROOMS AND FIRE RISER ROOM.
- PROVIDE COMPRESSIBLE FIRE STOPPING MATERIAL WITHIN THE DECK FLUTES AT ALL FIRE RATED PARTITIONS.
- PROVIDE COMPRESSIBLE FIRE STOPPING MATERIAL AND FIRE STOPPING SEALANT AT ALL PENETRATIONS OF FIRE RATED PARTITIONS.
- ALL FLYWOOD BLOCKING TO BE FIRE RETARDANT TREATED UNO. PROVIDE BLOCKING AS REQUIRED AT ALL PARTITION OPENINGS.
- TAPE, MUD, AND SAND GYPSUM BOARD SMOOTH READY FOR TENANT FINISHES AT INTERIOR FACE OF ALL GYPSUM BOARD SURFACES - PROVIDE ASTM C840 LEVEL 4 FINISH UNO. (INTERIOR FINISHES BY OTHERS, N.I.C.)
- INSTALL HOT-DIPPED GALVANIZED ADJUSTABLE WALL TIES AT (MIN) 18" O.C. HORIZONTALLY AND VERTICALLY AT MASONRY VENEER (MODULAR BRICK OR SUB-STRATE MATERIAL). PROVIDE ASTM C840 LEVEL 4 FINISH UNO. (INTERIOR FINISHES BY OTHERS, N.I.C.)
- PROVIDE 1/2" DENS-DECK PRIME SHEATHING (OR EQUAL) AT EXTERIOR METAL STUD WALL LOCATIONS SCHEDULED TO RECEIVE MEMBRANE ROOF SHEATHING. SUB-STRATE MATERIAL (SHEATHING) SHALL BE COMPATIBLE FOR ROOF MEMBRANE INSTALLATION AS RECOMMENDED BY ROOF MANUFACTURER.
- 3 1/4" CULTURED STONE (BASE) UNITS TO BE PROVIDED OVER MORTAR SETTING BED WITH SCRATCH COAT AND METAL LATH OVER CMU.
- PROVIDE 5/8" FRT FLYWOOD SHEATHING IN LIEU OF DENS-GLASS GOLD SHEATHING AT ALL PROPOSED TENANT SIGNAGE LOCATIONS.
- SOUND ATTENUATING BATT INSULATION TO BE PROVIDED OVER MORTAR SETTING BED WITH SCRATCH COAT AND METAL LATH OVER CMU.

**BUILDING 'B' FLOOR PLAN**  
 SCALE 1/8" = 1'-0"



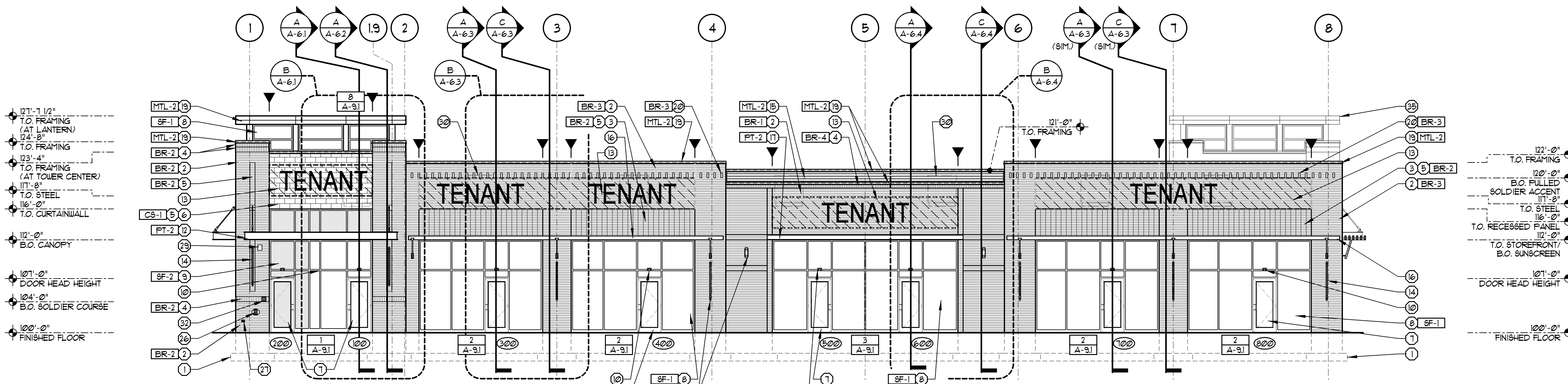
**WESTAR RETAIL BUILDING 'B'**  
 Phase III Development - Westar Neighborhood Retail Center  
 677 Worthington Road, Westerville, Ohio 43082  
 For N.P. Limited Partnership  
 8800 Lyra Drive, Suite 550, Columbus, Ohio 43240-2002

Copyright 2016. All Drawings are the sole material property of Ford & Associates Architects, Inc. and may not be used, duplicated or altered without the written consent of the Architect.

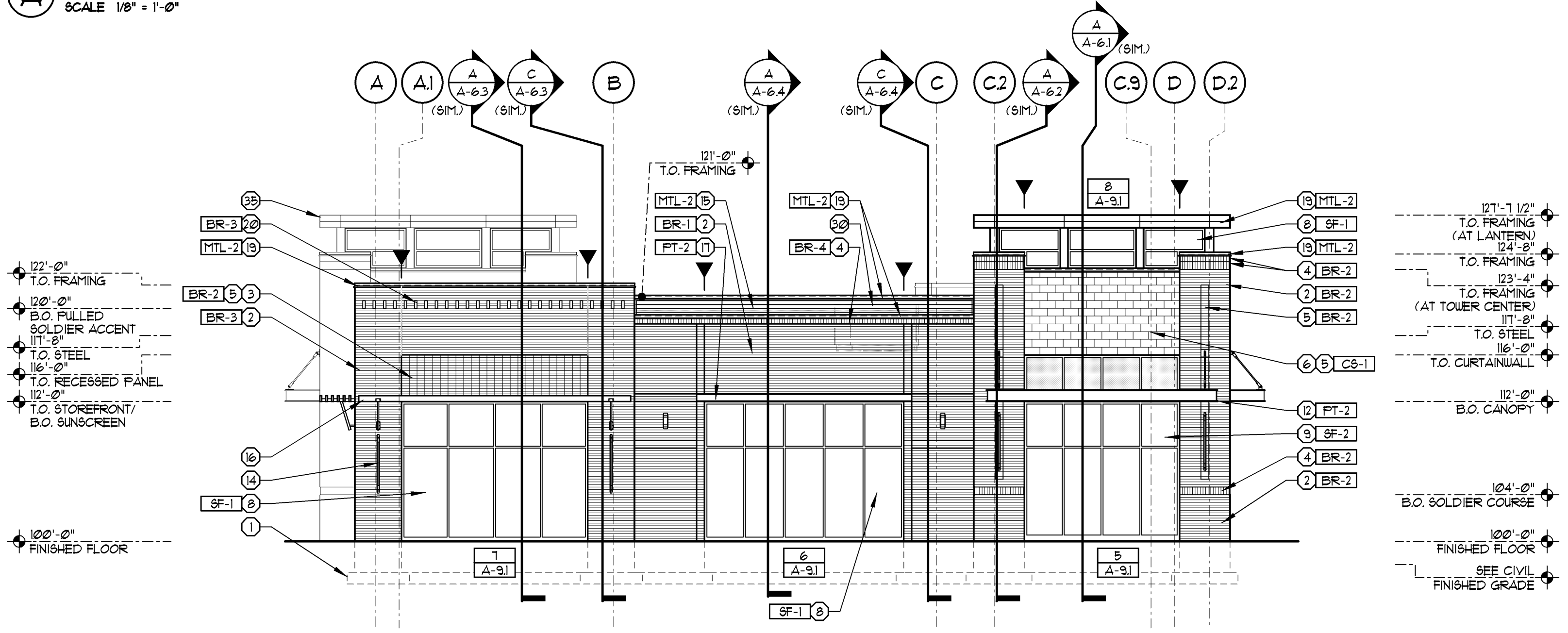
Mark P. Ford, License #9337  
 Expiration Date 12/31/2017

ISSUE	REVISION	DATE
PRELIMINARY		FEB. 24, 2016
OWNER REVIEW		MAR. 18, 2016
ZONING		APR. 15, 2016
BID		JUL. 8, 2016
PERMIT		JUL. 8, 2016
REVISION		

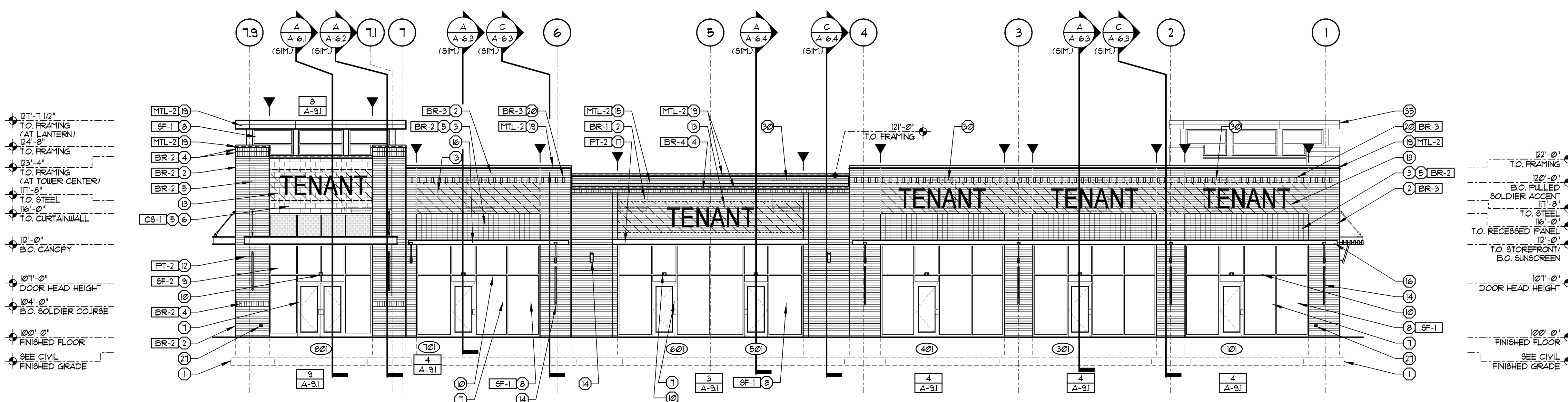
**BUILDING 'B' FLOOR PLAN**  
 PHASE II DEVELOPMENT  
**A-1.1**  
 SHELL BUILDING 'B'



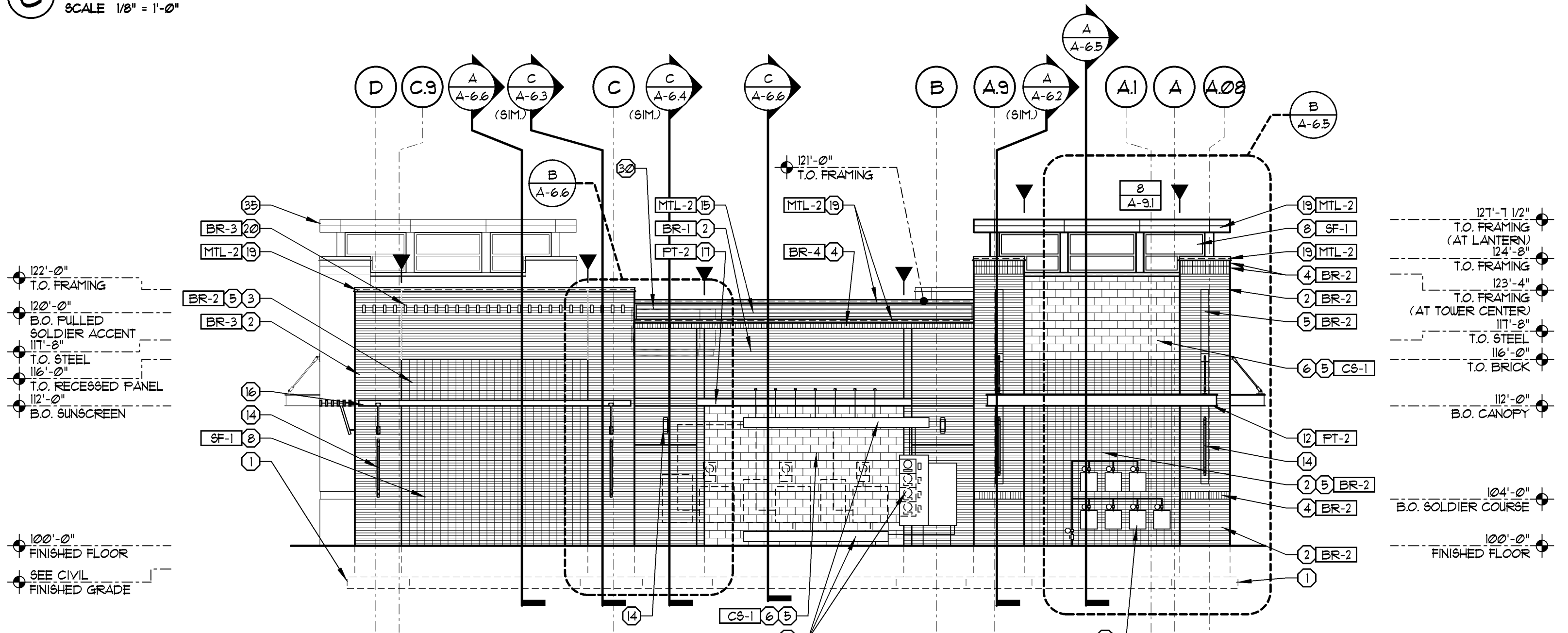
**A WEST BUILDING ELEVATION**  
 SCALE 1/8" = 1'-0"



**B SOUTH BUILDING ELEVATION**  
 SCALE 1/8" = 1'-0"



**C EAST BUILDING ELEVATION**  
 SCALE 1/8" = 1'-0"



**D NORTH BUILDING ELEVATION**  
 SCALE 1/8" = 1'-0"

SYMBOL LEGEND	
(X)	ELEVATION CODED NOTE TAG (SEE SHEET A-21 FOR SCHEDULE)
(XX)	DOOR NUMBER TAG (SEE SHEET A-81 FOR DOOR SCHEDULE)
X	STOREFRONT SYSTEM TAG (SEE SHEET A-91 FOR STOREFRONT ELEVATIONS)
XXX	MATERIAL / FINISH TAG (SEE SHEET A-21 FOR FINISH SCHEDULE)
—	CONTROL JOINT (SEE DETAILS P/A-13)

ELEVATION CODED NOTES	
1	LINE OF CONCRETE FOOTING / CMU FOUNDATION
2	BRICK VENEER, RUNNING BOND
3	BRICK VENEER, STACK BOND
4	BRICK VENEER, SOLDIER ACCENT COURSE
5	RECESSED BRICK/MASONRY PANEL 1/2"
6	MANUFACTURED CAST STONE VENEER, RUNNING BOND
7	3'-0" x 1'-0" MEDIUM-STILE, FULL LITE ALUMINUM ENTRANCE DOOR w/ 1" INSULATED TEMPERED GLASS
8	2 1/2" x 4 1/2" ALUMINUM STOREFRONT SYSTEM AS SCHEDULED, SEE SHEET A-91
9	2 1/2" x 6" - ALUMINUM CURTAIN WALL SYSTEM AS SCHEDULED, SEE SHEET A-91
10	EMERGENCY EGRESS EXIT (DISCHARGE) LIGHT, CENTER ABOVE DOOR
11	PREFINISHED METAL COLUMN WRAP TO MATCH STOREFRONT FRAMING, SEE DETAIL P/A-41
12	STEEL CANOPY, PAINT
13	HATCHED AREA INDICATES AREA OF CONTRACTOR (INSTALLED 5/8" PLY FLYWOOD IN LIEU OF TYPICAL GYPSUM SHEATHING AT TENANT SIGNAGE AREA. TYPICAL SIGNAGE TO BE PART OF TENANT IMPROVEMENT PACKAGE (N.I.C.))
14	DECORATIVE WALL MOUNTED LIGHT FIXTURE, SEE ELECTRICAL SHEETS
15	1/8" PREFINISHED CORRUGATED METAL SIDING, ORIENTED HORIZONTALLY, (DIMENSIONAL METALS INC. 'HUP-16')
16	PREFINISHED ALUMINUM SUNSCREEN ('CHARCOAL' TO MATCH STOREFRONT) WITH PREFINISHED BLACK STEEL BRACKETS
17	GALVANIZED STEEL C CHANNEL PAINT, SEE SECTIONS
18	INSULATED HOLLOW METAL SURFACE DOOR FRAME, SEE DOOR SCHEDULE, SHEET A-81, PAINT (PT-1), PROVIDE LOOSE ANGLE LINTEL & HEAD, PAINT, (PT-2)
19	PREFINISHED CONTINUOUS METAL (24 GA) FASCIA EDGE FLASHING
20	SINGLE SOLDIER BRICK, FULL 1/2"
21	DECORATIVE METAL RAILING, PAINT, PT-2
22	STRUCTURAL PATIO WALL, SEE LANDSCAPE SHEETS
23	CEDAR DUMPSTER GATES w/ GALV. STEEL PIPE FRAME, PROVIDE STEEL LATCH AND VERT. FIN AT EACH DOOR
24	CEDAR WOOD TRELLIS PANELS w/ 1/4" 2" FACE OF BUILDING (SEE DETAIL C/A-62 AND LANDSCAPE SHEETS)
25	MEDIUM PRESSURE GAS SERVICE AND METER SETS, (SEE PLUMBING SHEETS), PAINT PT-1
26	FIRE DEPARTMENT CONNECTION MOUNT ON ADDRESS SIDE OF BUILDING, COORDINATE FINAL LOCATION WITH A.U. AND OWNER'S REP. (SEE FIRE PROTECTION SHEETS)
27	FROST-PROOF HOSE BIBS (SEE PLUMBING SHEETS), ENSURE ALL PIPING IS WITHIN THE BUILDING THERMAL ENVELOPE
28	ELECTRIC SERVICE WIREWAY AND METER SET (SEE ELECTRICAL SHEETS), PAINT PT-1
29	WATERPROOF LOCK/STROBE MOUNT AT 11'-0" AFF. (SEE ELECTRICAL SHEETS)
30	LINE OF ROOFTOP HVAC EQUIPMENT BEYOND (SEE MECHANICAL SHEETS)
31	THRU-WALL 6" OVERFLOOR DRAIN w/ LAMB'S TONGUE OVERFLOW FITTING & INSECT SCREEN (SEE PLUMBING SHEETS), MOUNT AT 2'-0" AFF.
32	FIRE DEPARTMENT ACCESS KNOX BOX, MOUNT AT 64" AFF. SEE SPECIFICATIONS
33	VENEER CONTROL JOINT, SEE DETAILS ON SHEET P/A-13, MATCH COLOR OF BEAM TO ADJACENT MASONRY
34	WALL PACK LIGHT FIXTURE AT 16'-0" AFF. TYPICAL OF 3 SEE ELECTRICAL SHEETS
35	LINE OF ROOF BEYOND

EXTERIOR MATERIAL FINISH KEY			
MARK	MANUFACTURER	DESCRIPTION	REMARKS
<b>MODULAR BRICK VENEER</b>			
BR-1	PINE HALL	SPEKTRA SERIES- 'PLATINUM'	MORTAR- FLAMINGO BRICKMENT, COLOR- 'OLD COLONIAL'
BR-2	PINE HALL	SPEKTRA SERIES- 'FEWTER'	MORTAR- FLAMINGO BRICKMENT, COLOR- 'OLD COLONIAL'
BR-3	BORAL MODULAR	FREEDOM COLLECTION- 'CRIMSON'	MORTAR- FLAMINGO BRICKMENT, COLOR- 'OLD COLONIAL'
BR-4	BORAL MODULAR	FREEDOM COLLECTION- 'GIDEAL'	MORTAR- FLAMINGO BRICKMENT, COLOR- 'OLD COLONIAL'
<b>MANUFACTURED CAST STONE</b>			
CS-1	ROCKCAST	CUSTOM CAST STONE SERIES, SLATE NOT 8" H x 16" W 4" D	SMOOTH FINISH, RUNNING BOND
CS-2	ROCKCAST	CUSTOM CAST STONE SERIES, SLATE PIER CAP, 8" H x 16" W 4" D	NATURAL STONE w/ SLOPED ('TAPERED') PROFILE PROVIDE SAMPLE FOR APPROVAL
CS-3	ROCKCAST	CUSTOM CAST STONE SERIES, WHEATSTONE BASE, NOT 8" H x 24" W x 4" D	SMOOTH FINISH, RUNNING BOND PROVIDE SAMPLE FOR APPROVAL
<b>METAL COPING, FLASHING, DOWNSPOUTS</b>			
MTL-1	DM1	DYNACLAD PVDF PAINT FINISH 'METALLIC COPPER'	DIMENSIONAL METALS, INC.
MTL-2	DM1	DYNACLAD PVDF PAINT FINISH 'CLASSIC BRONZE'	DIMENSIONAL METALS, INC.
<b>PAINT</b>			
PT-1	SHERWIN WILLIAMS	SU2807 'ROCKWOOD MEDIUM BROWN'	SEMI-GLOSS
PT-2	SHERWIN WILLIAMS	'MATCH STOREFRONT CHARCOAL' FINISH COLOR	SEMI-GLOSS
<b>STOREFRONT SYSTEM</b>			
SF-1	KAUNEER	2 1/2" x 4 1/2" TRIFAB V6 48T COLOR- 'CHARCOAL'	
SF-2	KAUNEER	2 1/2" x 6" - 1600 ALUMINUM CURTAIN WALL COLOR- 'CHARCOAL'	
<b>STAIN</b>			
ST-1	SHERWIN WILLIAMS	WOODSCAPES EXTERIOR ACRYLIC SOLID COLOR STAIN	PEPPERIDGE #3U 3011

**WESTAR RETAIL BUILDING 'B'**  
 Phase III Development - Westar Neighborhood Retail Center  
 677 Worthington Road, Westerville, Ohio 43082  
 For N.P. Limited Partnership  
 8800 Lyra Drive, Suite 550, Columbus, Ohio 43240-2002

Copyright 2016. All Drawings are and shall remain the property of Ford & Associates Architects, Inc. and may not be used, duplicated or altered without the written consent of the Architect.

ISSUE	REVISION	DATE
PRELIMINARY		FEB 24, 2016
OWNER REVIEW		MAR 18, 2016
ISSUING		APR 15, 2016
BID		JUL 8, 2016
PERMIT		JUL 8, 2016

**BUILDING 'B' ELEVATIONS**

FAA #16071.00

**PHASE II DEVELOPMENT**

**A-2.1**

**SHELL BUILDING 'B'**



1800lopbate.com



Toys 'R Us  
Babies 'R Us  
Earth Fare  
Hobby Lobby

COSTCO WHOLESALE

Puro  
G

MUTTS & CO  
101

POLARIS place  
224 units

NORTH PARK PLACE  
264 units

270 units

Gemini Place

Ikea Way

Polaris Parkway

County Line Road

S Old State Rd

Worthington Road

CHASE  
Corporate Headquarters  
11,000 employees

310 units

Paramount Assisted living